



Soma Spectroradiometer

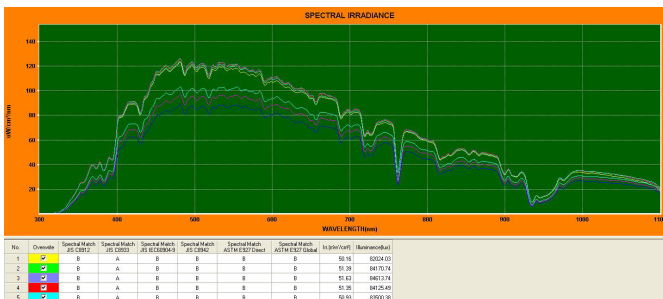
The Soma spectroradiometer accurately measures the spectral irradiance of a solar simulator and determines its classification per the ASTM and JIS standards.

The Soma Spectroradiometers are designed to accurately measure the spectral irradiance of sunlight. Used in conjunction with a solar simulator and included software, the light source can be tested and quantified. This instrument utilizes a proprietary high-efficiency diffraction grating spectrometer and the S-2441 model adds the ability to measure pulse-type solar simulators with an included triggered collector. This high-performance spectroradiometer is inexpensive and compact, making it ideal for all users. The Soma S-2440/2441 features a wavelength of 300~1100nm, 5nm resolution, and 2.5~1,000msec exposure time while the S-2242 model adds a quicker 1~1,000msec exposure time. It operates off of Windows 2000/XP/Vista (32 bit) and has both spectral irradiance, ASTM and JIS output calculations.

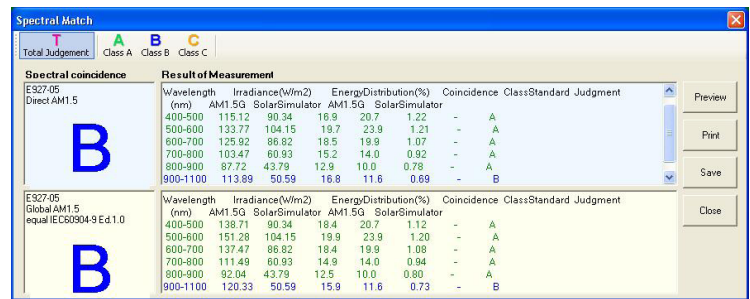
Soma Spectroradiometer

Main Features

- Multi-function- Can measure pulse-type, as well as non-pulse-type, solar simulators
- Ideal for all users- Inexpensive and compact
- Fast- Provide quick measurements
- Calculations- Calculate adherence to the ASTM and JIS standards
- Highly accurate- High-efficiency spectral irradiance measurements



Spectroradiometer output reading



Product Specifications

S-2440 Soma Spectroradiometer

Model Name	S-2440, S-2441, S-2242*	Source Measuring (And Added Time resolving measuring mode)*
Wavelength	300 – 1100nm	Data Format
Slit Wavelength Width	5nm	CSV Text 1nm data step
Exposure Time	2.5 ~ 1,000 msec, (1 ~ 1,000 msec)*	Measuring Item
Incidence optics	Reflecting Diffuser 1m length optical fiber	Spectral Irradiance ($\mu\text{W}/\text{cm}^2/\text{nm}$)
Material of Reflectance	Spectralon®	Classification of spectral coincidence class: JIS C 8912, JIS C 8933, IEC 60904-9(ED-2) (All and JIS C 8942 for S-2242)*
Trigger Unit	None (Included)*†	Carrying Case
Operating System	Windows2000/XP/Vista (32 bit)	Included
Interface	USB 2.0	Power
Measuring Modes	Normal Measuring, Trigger Signal, Repeat Measuring, Standard Light	AC100V (DC24V 1A for Mainbody)
		Size
		90(W)×110(H)×170(D) / 1kg
		* Note: For model S-2242
		† Note: For model S-2441

Specifications are subject to change without notice.

Soma Optics, LTD
23-6 Hirai, Hinodemachi, Nishitama-gun,
Tokyo 190-0182 Japan
TEL : 81-42-597-3256
FAX : 81-42-597-3208
www.somaopt.co.jp
sales@somaopt.co.jp

Exclusively Distributed
in North America by:



KONICA MINOLTA

SENSING AMERICAS, INC.

Konica Minolta Sensing Americas, Inc.
101 Williams Drive
Ramsey, NJ 07446 USA
Phone: 888-473-2656
Fax: 201-236-4300
www.konicaminolta.com/sensingusa
www.shopkmsa.com