

# ColorMatcher® Series

Premier LED Viewing Booths for Color Matching and Inspection



*CMB-2540/LED with optional floor stand and two shallow flat file drawers*

Industry standards require that product viewing booths meet strict specifications in regard to color quality, light intensity, evenness of illumination, viewing/illumination geometry, and surround conditions.

## Meeting Industry Standards

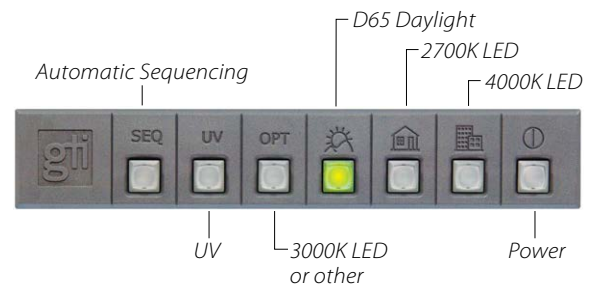
A GTI LED ColorMatcher viewing booth will enable you to make visual color inspections with confidence. The D65 LED source ensures that you are compliant with industry viewing standards and will be making consistent color decisions across the supply chain. The other LED sources allow you to view color in an end-user environment and to test for metamerism. The UV LED source is used to detect optical brighteners and fluorescents.

These lamps provide a long lifetime of use, energy savings, and environmental benefits. ColorMatchers conform to the ASTM D1729, ISO 3668, SAE J361, BS-950, AS 1580, and AATCC Procedure #9 viewing standards. All booths are supplied with a certificate of product conformance (NIST traceable).

## CMB LED Product Features

- Four model sizes to accommodate nearly any size sample
- High CRI (RA>98)
- ASTM D1729, SAE J361, and ISO 3668 compliance
- NIST traceable certificate of product conformance included
- Five LED light sources:
  - D65 or D50 LED Daylight
  - 3000K or 4000K LED
  - 2700K LED
  - Black Light Blue LED
  - Optional LED source: D50 LED, 3000K LED, 3500K LED, or Special Walmart LED
- Available fluorescent source: D75, SPX35, Horizon, and more
- Push Button—"Instant On" lamp selector
- Automatic light source sequencing
- GTI ColorGuard 3.0—Tracks light source usage and indicates when to relamp
- Optional floor stand and storage accessories
- Fluorescent models are available. Contact GTI.

## CMB LED Push Button Control Panel



*Desktop version of CMB-2540/LED*

# LED ColorMatcher® Series

## Specifications

Model	CMB-2028/LED	CMB-2540/LED	CMB-3052/LED	CMB-3064/LED
<b>Viewing Area</b> (H × W × D)	19" × 28" × 20" 48 cm × 71 cm × 51 cm	25" × 40" × 25" 64 cm × 102 cm × 64 cm	30" × 52" × 30" 76 cm × 132 cm × 76 cm	30" × 64" × 30" 76 cm × 163 cm × 76 cm
<b>Product Dimensions</b> (H × W × D)	24.75" × 30" × 21.5" 63 cm × 76 cm × 55 cm	31" × 42" × 26.75" 79 cm × 107 cm × 68 cm	36" × 54" × 31.5" 91 cm × 137 cm × 80 cm	36" × 66" × 31.5" 91 cm × 168 cm × 80 cm
<i>Units can be combined for increased width. Plus, larger custom sized units are available.</i>				



*CMB-2540/LED  
with floor stand on  
left; and with floor  
stand and table  
riser on right.*

## Floor Stand and Storage Accessories

- Floor stands on casters are available for all models and are height adjustable at setup.
- File drawers are available in single deep (1F) or double shallow (2F) and can be used with or without floor stands and cabinets. *Not offered on CMB-3064/LED.*
- Storage cabinets are available for CMB-2540/LED and CMB-3052/LED models. Cabinets can be combined with single (1F) or double (2F) drawers or table risers (TS).
- Flat files are available for CMB-2540/LED and CMB-3052/LED models. Flat files can be combined with single (1F) or double (2F) drawers or table riser (TS).



*CMB-2540/LED shown with two shallow  
flat file drawers and storage cabinet at left;  
and shown with one deep file drawer and  
eight shallow flat file drawers at right.*

## Viewing Enhancement Accessories

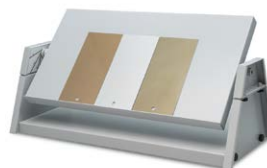


### Directional FX Light

Available for evaluating gonio-apparent coatings.

### Viewing Tables

45 degree and variable angle viewing tables for viewing flat samples.



### Matte Black Inserts

For improved viewing of glossy, highly specular, and dark objects.