



KONICA MINOLTA

MiniMatcher® Series

Affordable Tabletop LED Color Matching and Inspection Systems



*MiniMatcher MM-2e/LED (left) and
MM-4e/LED (right)*

GTI MiniMatchers help you to evaluate and communicate color with confidence. They are ideal for the viewing of coatings, textiles, packaging, cosmetics, and more. All MiniMatchers utilize GTI's LED technology to comply with industry standards and include a certificate of product conformance (NIST traceable).

MiniMatcher systems provide standardized viewing conditions for visual color matching, creating an overall better color evaluation and communication process. The results are fewer errors and faster approvals, thereby lowering costs.

MiniMatcher 1e and 2e LED Models

These models include three LED light sources—D65 daylight, 2700K, and 4000K. The D65 LED source is compliant to the ASTM D1729 viewing standard. The 2700K and 4000K LED sources are for reviewing color in an end-use environment and testing for metamerism. A 315–400nm Black Light Blue LED is offered as an optional fourth source. Lamps are controlled by toggle switches. A diffusion lens is included.

MiniMatcher 4e, 2436e, 2448e, and 2460e LED Models

These larger MiniMatchers include five light sources: daylight (D50 or D65 LED), 2700K LED, 3000K LED, 4000K LED, and a 315–400nm Black Light Blue LED. Alternate sources are available (see specifications).

They feature an illuminated push button control that confirms which source is selected. To assist with metamerism testing, one touch automatic light source sequencing is included. This allows the user to program a set of light sources that will automatically sequence for a fixed period of time. A daylight source timer and diffusion lens are standard.

MiniMatcher Features Include:

- D65 or D50 LED Daylight
- High CRI (Ra>98)
- Affordable prices
- Low maintenance
- Range of sizes and models
- Conforms to industry viewing standards
- Multiple light sources
- Supplied with a certificate of product conformance (NIST traceable)
- Easy to use and fast set-up

MiniMatcher® Series

LED systems to accurately view, evaluate, and assess product color

Product Specifications

MM-1e/LED and MM-2e/LED Features

Model	Viewing Area H × W × D	Daylight Timer	Switches	Light Source Sequencing
MM-1e/LED	14.25" × 24" × 13.25" (36 cm × 61 cm × 34 cm)	Optional	Toggle	No
MM-2e/LED	13" × 18" × 10" (33 cm × 46 cm × 25 cm)	Optional	Toggle	No
Standard Light Sources: Daylight (D65 LED or D50 LED); 2700K LED, 4000K LED Optional Light Sources: 315–400nm Black Light Blue LED or 3000K LED (MM-1e/LED only)				

MM-4e/LED, MM-2436e/LED, MM-2448e/LED, and MM-2460e/LED Features

Model	Viewing Area H × W × D	Daylight Timer	Switches	Light Source Sequencing
MM-4e/LED	14.25" × 24" × 16" (36 cm × 61 cm × 41 cm)	Included	Push Button	Yes
MM-2436e/LED*	22.75" × 36" × 23" (58 cm × 91 cm × 58 cm)	Included	Push Button	Yes
MM-2448e/LED*	22.75" × 48" × 23" (58 cm × 122 cm × 58 cm)	Included	Push Button	Yes
MM-2460e/LED*	22.75" × 60" × 23" (58 cm × 152 cm × 58 cm)	Included	Push Button	Yes
Standard Light Sources: Daylight (D65 LED); 2700K LED, 3000K LED, 4000K LED, and 315–400nm Black Light Blue LED Optional Light Sources: D50 LED, 3500K LED				
* The MM-2436e/LED, 2448e/LED, and 2460e/LED are also available with three sources (D50 LED, 2700K LED, and 4000K LED) operating on toggle switches. UV can be added as a fourth source.				

Physical Specifications

Model	Dimensions H × W × D
MM-1e/LED	19" × 26.5" × 16.5" (48 cm × 67 cm × 42 cm)
MM-2e/LED	18" × 20.5" × 13.25" (46 cm × 52 cm × 34 cm)
MM-4e/LED	19" × 26.5" × 19" (48 cm × 67 cm × 48 cm)
MM-2436e/LED	28.5" × 38.5" × 26" (73 cm × 98 cm × 66 cm)
MM-2448e/LED	27.5" × 50.5" × 26" (70 cm × 128 cm × 66 cm)
MM-2460e/LED	27.5" × 62.5" × 26" (70 cm × 159 cm × 66 cm)

From top down: MM-2436e/LED, MM-2448e/LED, and MM-2460e/LED. Bottom row left to right: MM-4e/LED, MM-2e/LED, and MM-1e/LED.



Accessories

ColorGuard 3.0

Available on five-source models, ColorGuard tracks usage for each source.



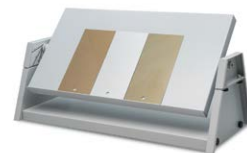
Directional FX Light

Available for evaluating gonio-apparent coatings.



Viewing Tables

45 degree and variable angle viewing tables for viewing flat samples.



Matte Black Inserts

For improved viewing of glossy, highly specular, and dark objects.