



KONICA MINOLTA

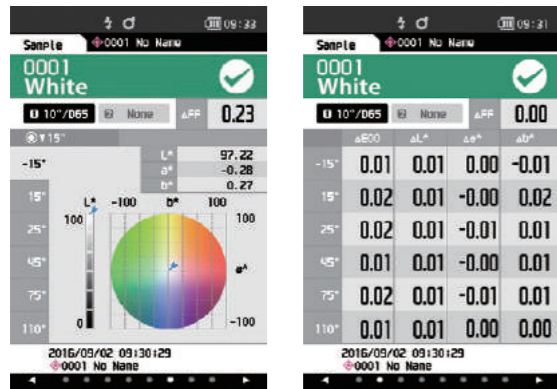


Spectrophotometer CM-M6

High precision, multi-angle model for measuring from 6 angles!



Display examples

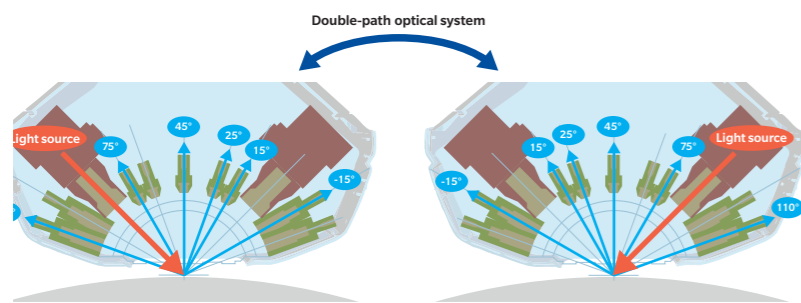


The CM-M6 has a built-in 3.5-inch color LCD that can display measured values both numerically and on colored graphs, for easier visualization of results.

The CM-M6 is a compact, lightweight, multi-angle spectrophotometer. Incorporating a new patented 'double-path optical system', it exhibits outstanding versatility in various measuring applications.



Multi-angle measurements (1 light source, 6 viewing angles)



Illumination angle: 45°

Aspecular viewing angles: -15°, 15°, 25°, 45°, 75°, 110°

* These 6 viewing angles make it possible to detect differences in pearl colors with higher accuracy than previous spectrophotometers.

Double-path optical system

The CM-M6 has duplicate illumination/viewing systems symmetrical about its center axis. This system ensures high measuring stability even when the instrument is slightly tilted and makes it possible to stably measure R300 curved surfaces like side mirrors.

Compact, lightweight, vertical format



The compact body (with hand strap) can be stably held with one or two hands. Moreover, it is loaded with features ideal for measuring vehicle exteriors such as a rubber cover around the measurement aperture to safeguard measurement subjects against scratching and Bluetooth® support (option) for sending measurement data to remote devices over wireless connections.

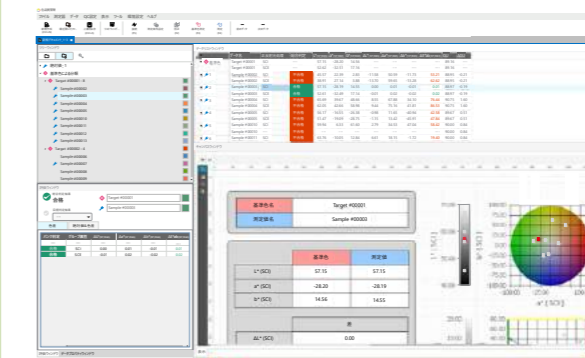
Ø6 mm diameter viewing beam for measuring small surfaces

The viewing beam is 6 mm in diameter, so small surfaces that were hard to measure with earlier models can be measured.



(Option) Color Data Software SpectraMagic NX2

SpectraMagic NX2 is color management software that gives users a customizable screen display and a wide range of functions for operating and configuring their spectrophotometers or Chroma Meter from a computer. Users can display data lists and create color difference graphs and spectral graphs to assist in color management that requires judgment based on numerous values and indicators.



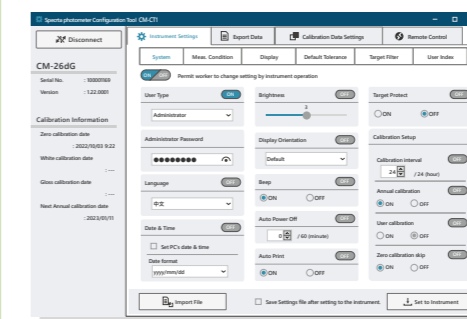
You can see the details in the catalog from the following 2D code. ↓

[SpectraMagic NX2 web Site](#)

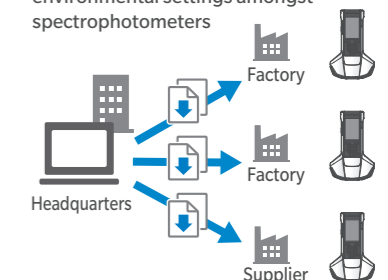


Spectrophotometer Configuration Tool CM-CT1 Ver.1.5 or later

The CM-CT1 gives manufacturers the means for easily and quickly setting up their CM-M6 spectrophotometers. Moreover, when multiple devices are used or when the same conditions need to be set amongst multiple factories or suppliers, settings can be compiled into a file and shared.



Easily unify measurement conditions and environmental settings amongst spectrophotometers



Spectrophotometer Configuration Tool CM-CT1

- OS: Windows® 10 Pro 64 bit Version 1903 or higher/Windows® 11 Pro
- CPU: 2.0 GHz equivalent or faster
- Memory: 2 GB or more
- Hard disk: 10 GB or more of free space for installation
- Other: USB port (For connecting to spectrophotometers)

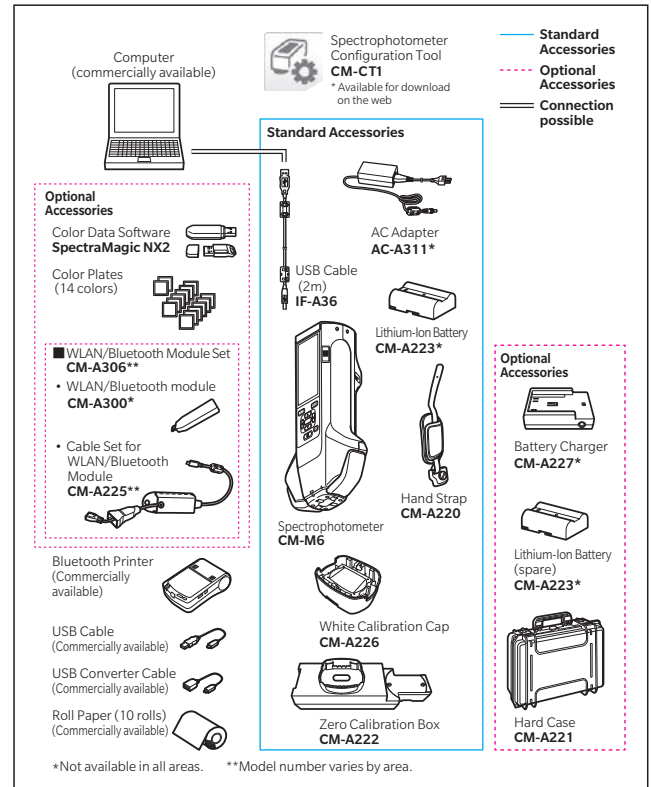
*Windows® is a trademark or registered trademark of Microsoft Corporation in the USA and other countries.

Main Specifications

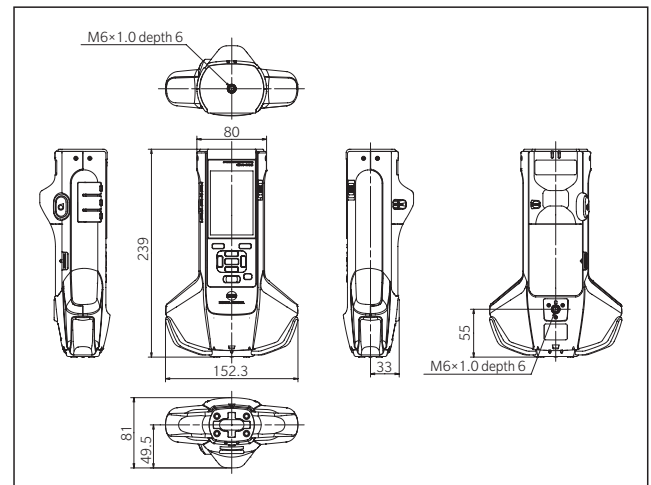
Model	Spectrophotometer CM-M6
Illumination/viewing system	45° illumination : -15°/15°/25°/45°/75°/110° aspecular viewing angles with double-path technology
Detector	Dual 40-element silicon photodiode arrays
Spectral separation device	Linear variable filter
Wavelength range	400-700 nm
Wavelength pitch	10 nm
Measurement range	6 angles: 0-600%; Output/display resolution : 0.01 %
Light source	High-CRI white LED
Measurement time	Approx. 4.5 seconds
Minimum measurement interval	Approx. 5 seconds
Battery performance	Approx. 1,500 measurements (approx. 1,000 measurements when using Optional WLAN/Bluetooth module) when measurements are taken at 10-second intervals at 23°C with the dedicated lithium battery
Measurement/illumination area	Ø6 mm/Ø12 mm
Repeatability	Chromaticity value : Standard deviation within ΔE^*ab 0.05 (When a white calibration plate is measured 30 times at 10-second intervals after white calibration)
Inter-instrument agreement	Within ΔE^*ab 0.2 (Average for 12 BCRA Series II color tiles compared to values measured with a master body under Konica Minolta standard measurement conditions)
Observer	2° or 10° Standard Observer
Illuminant	A, C, D50, D65, F2, F6, F7, F8, F10, F11, F12 User illuminant*1 (simultaneous evaluation with two illuminants possible)
Displayed data	Colorimetric values, color-difference values/graph, line graph (colorimetric/color-difference values), pass/fail judgement
Colorimetric data	L*a*b*, L*C*h
Indexes	MI, FF value (Flop value)
Color-difference formula	ΔE^*ab (CIE 1976), $\Delta(L^*a^*b^*)$, $\Delta(L^*C^*H^*)$, CMC (l:c), ΔE^*94 (CIE 1994), $\Delta E00$ (CIE DE2000), ΔE (DIN 6175), $\Delta E99o$ (DIN 99o), ΔE (Audi 2000)
Data memory	Target data: 200 measurements; Sample data: 800 measurements
Pass/Fail judgement	Tolerances can be set for color-difference values
Displayed languages	Japanese, English, German, French, Italian, Spanish, Chinese (Simplified), Portuguese, Russian, Turkish, Polish
Display	3.5-inch TFT color LCD
Interfaces	USB 2.0; Bluetooth (SPP-compatible)* WLAN (802.11 a/b/g/n)* * Optional WLAN/Bluetooth module required WLAN security supports WPA2-PSK (WPA2-Personal) and WPA-PSK (WPA-Personal) for the AdHoc method, and WPA3-PSK (WPA3-Personal), WPA2-PSK (WPA2-Personal) and WPA-PSK (WPA-Personal) for the Infrastructure method.
Power	Rechargeable lithium-ion battery (removable), dedicated AC adapter
Charging time	Approx. 5 hours when no charge remains
Operation temperature/humidity range	0-40 °C, relative humidity is 85% or less (at 35 °C) with no condensation
Storage temperature/humidity range	-20-45 °C, relative humidity is 85% or less (at 35 °C) with no condensation
Size (W×H×D)	Approx. 152 × 239 × 81 mm
Weight	Approx. 1.1 kg (Including battery)

*1 : Optional Color Data Software SpectraMagic NX2 Pro is required for setting user-configured illuminants.

System Diagram



Dimensions (Units : mm)



- KONICA MINOLTA, the Konica Minolta logo and symbol mark, "Giving Shape to Ideas" and SpectraMagic are registered trademarks or trademarks of Konica Minolta, Inc.
- Bluetooth® is a registered trademark of Bluetooth SIG, Inc. and is used under license agreement.
- Displays shown are for illustration purpose only.
- The specifications and appearance shown herein are subject to change without notice.



SAFETY PRECAUTIONS

- For correct use and for your safety, be sure to read the instruction manual before using the instrument.
- Always connect the instrument to the specified power supply voltage. Improper connection may cause a fire or electric shock.
 - Be sure to use the specified batteries. Using improper batteries may cause a fire or electric shock.

ISO Certifications of KONICA MINOLTA, Inc., Sakai Site



JQA-QMA15888
Design, development, manufacture/
manufacturing management, calibration, and
service of measuring instruments



JQA-E-80027
Design, development, manufacture, service and sales
of measuring instruments

KONICA MINOLTA, INC.	Osaka, Japan				
Konica Minolta Sensing Americas, Inc.	New Jersey, U.S.A.	PHONE: (888)473-2656 (in USA), +1(201)236-4300 (outside USA)	FAX: +1(201)785-2480	E-Mail: service.us@konicaminolta.com	
Konica Minolta Sensing Europe B.V.	European HQ / BENELUX German Office French Office UK Office Italian Office Swiss Office Nordic Office Polish Office	Nieuwegein, Netherlands München, Germany Roissy CDG Cedex, France Warrington, United Kingdom Cinisello Balsamo, Italy Dietikon, Switzerland VÄSTRA FRÖLUNDA, Sweden Wroclaw, Poland	PHONE: +31(0)30 248-1193 PHONE: +49(0)89 4357 156 0 PHONE: +33(0)1 80 11 10 70 PHONE: +44(0)1925 467300 PHONE: +39 02849488.00 PHONE: +41(0)43 322-9800 PHONE: +46(0)31 7099464 PHONE: +48(0)71 73452-11	E-Mail: info.belux@seu.konicaminolta.eu E-Mail: info.germany@seu.konicaminolta.eu E-Mail: info.france@seu.konicaminolta.eu E-Mail: info.uk@seu.konicaminolta.eu E-Mail: info.italy@seu.konicaminolta.eu E-Mail: info.switzerland@seu.konicaminolta.eu E-Mail: info.nordic@seu.konicaminolta.eu E-Mail: info.poland@seu.konicaminolta.eu	
Konica Minolta (CHINA) Investment Ltd.	SE Sales Division Beijing Office Guangzhou Office Chongqing Office Qingdao Office Wuhan Office Shenzhen Office Xiamen Office	Shanghai, China Beijing, China Guangzhou, China Chongqing, China Shandong, China Hubei, China Shenzhen, China Xiamen, China	PHONE: +86-(0)21-6057-1089 PHONE: +86-(0)10-8522 1551 PHONE: +86-(0)20-3826 4220 PHONE: +86-(0)23-6773 4988 PHONE: +86-(0)532-8079 1871 PHONE: +86-(0)27-6885 0586 PHONE: +86-(0)755-2868 7535 PHONE: +86-(0)592-7107 399	E-Mail: hcn_sensing@gcp.konicaminolta.com E-Mail: hcn_sensing@gcp.konicaminolta.com E-Mail: hcn_sensing@gcp.konicaminolta.com E-Mail: hcn_sensing@gcp.konicaminolta.com E-Mail: hcn_sensing@gcp.konicaminolta.com E-Mail: hcn_sensing@gcp.konicaminolta.com E-Mail: hcn_sensing@gcp.konicaminolta.com E-Mail: hcn_sensing@gcp.konicaminolta.com	
Konica Minolta Sensing Singapore Pte. Ltd.	Singapore	PHONE: +65 6563-5533		E-Mail: se-service.sg@konicaminolta.com	
Konica Minolta Sensing Korea Co., Ltd.	Korean HQ Cheonan Office	Goyang-si, Korea Cheonan-si, Korea	PHONE: +82(0)2-523-9726 PHONE: +82(0)41-556-9726	E-Mail: se.korea@konicaminolta.com E-Mail: se.korea@konicaminolta.com	

Addresses and telephone/fax numbers and e-mail address are subject to change without notice.
For the latest contact information, please refer to KONICA MINOLTA Worldwide Offices web page:

<https://konicaminolta.com/instruments/network>