



KONICA MINOLTA

Spectrophotometer

**CM-3700A Plus**



Konica Minolta's

Flagship Benchtop Spectrophotometer

# Spectrophotometer

## CM-3700A Plus



### ■ High-precision measurement

The CM-3700A Plus is the flagship benchtop spectrophotometer from Konica Minolta, incorporating the very pinnacle of optical technologies.

Compared to previous model CM-3700A, which was introduced to help comply with many businesses that require advanced color control, the new CM-3700A Plus offers a significantly improved Inter-Instrument Agreement, which enables even more precise color management. Also, adjusting the UV cut filter allows for highly accurate measurements of samples containing optical whitening agents, such as paper and pulp.

#### ● Focussed on Stability

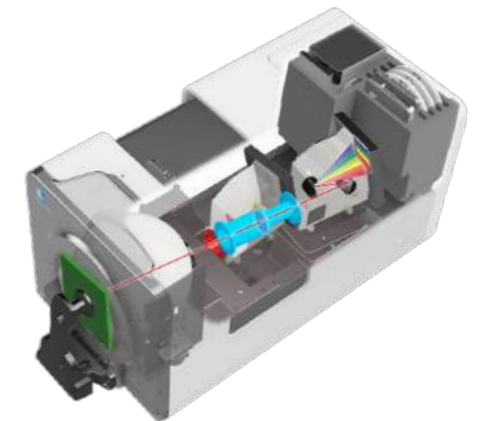
The new optical system is made of stainless steel with a very low coefficient of thermal expansion for improving durability.

#### ● Barium sulfate coating for reliable measurement

Konica Minolta uses barium sulfate to stabilize the diffuse illumination within the integrating sphere and reflection characteristics, using original coating method developed with our own advanced technology.

#### ● Unparalleled repeatability of Black and dark colors

Samples with very low reflectance can now be measured with higher accuracy. In particular, the repeatability of black color is greatly improved when compared to the previous model.



### ■ High Inter-Instrument Agreement and better compatibility with previous models

The CM-3700A has achieved a high inter-instrument agreement of  $\Delta E^*ab$  0.08 or less. This enables more precise color management of multiple units and locations in the supply chain.

In addition, the difference to measured values with the CM-3700A is minimal, allowing the reference data used in the CM-3700A to be transferred to the CM-3700A Plus, facilitating a more efficient transition process.

**Pursuing high-precision and reliability**  
**Flagship Benchtop spectrophotometer**



# Pursuit of precise measurement and usability

## ■ The measurement status and setting options

The measurement conditions are displayed on the status panel. Additionally, equipped with four pre-tapped mounting holes on the front, allowing for flexible jig placement according to your needs.



Four pre-tapped mounting holes are positioned on the front.

## ■ Transmittance specimen chamber and Accessory Storage Space

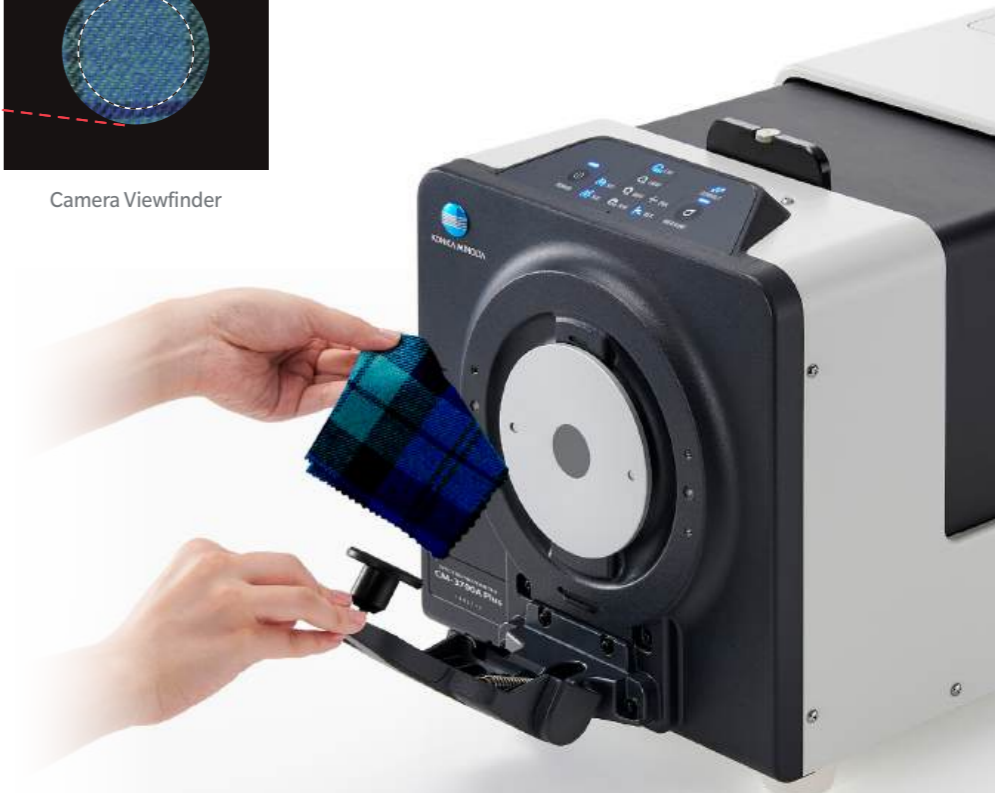
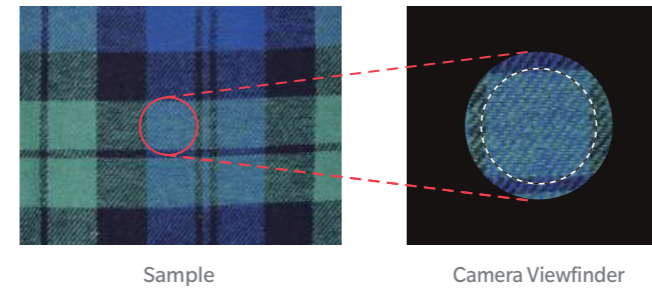
The improved transmittance specimen chamber design makes it easier to measure liquid and transparent samples. The main body has the space to store accessories such as white calibration plate, zero calibration box, target mask, etc..



## ■ Camera Viewfinder

The camera viewfinder feature allows you to view the sample directly on your PC screen to ensure precise positioning. Captured images can be saved with corresponding measurement data to improve management and auditing of data.

\*SpectraMagic NX2 software (option) is required.



## ■ More efficient measurement process

The simultaneous measurement of SCI/SCE enables faster measurement, with a 50% reduction in measurement time compared to the previous model, significantly enhancing the efficiency of the operational process.

### Measurement time comparison (for SCI/SCE measurements)



\* Total time of SCI and SCE measured separately for the previous model; time of simultaneous measurement for CM-3700A Plus

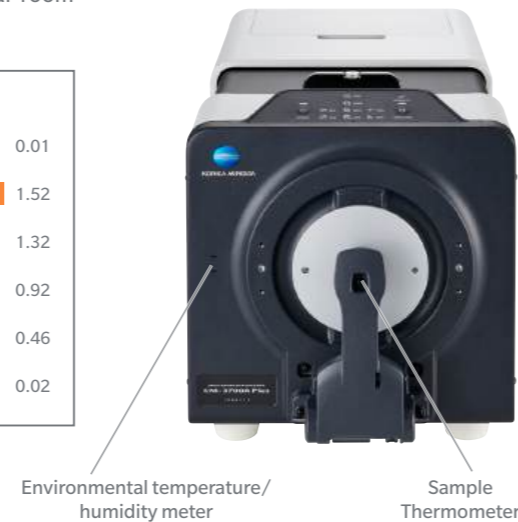
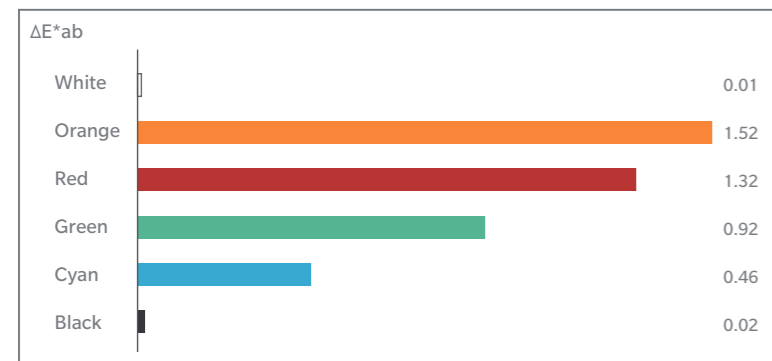


# Functions for high reliability

## ■ Environmental temperature/humidity meter and sample thermometer

Since highly saturated colors are particularly sensitive to temperature effects the CM-3700A Plus is equipped with an environmental temperature/humidity meter and a sample thermometer. This feature enhances color management, particularly for highly saturated colors that are sensitive to temperature fluctuations.

Temperature characteristics when color tiles are varied by 10°C near room temperature ( $\Delta E^*ab$ ) \*Based on Konica Minolta's test conditions



## ■ Color Data Software SpectraMagic NX2 (Option)

SpectraMagic NX2 is a color management software that offers users a customizable screen display and a wide range of functions for operating and transferring data between their spectrophotometer and computer for in-depth analysis. The software allows users to display data lists and generate color difference and spectral graphs, facilitating effective color management based on various values and indicators for informed decision-making.



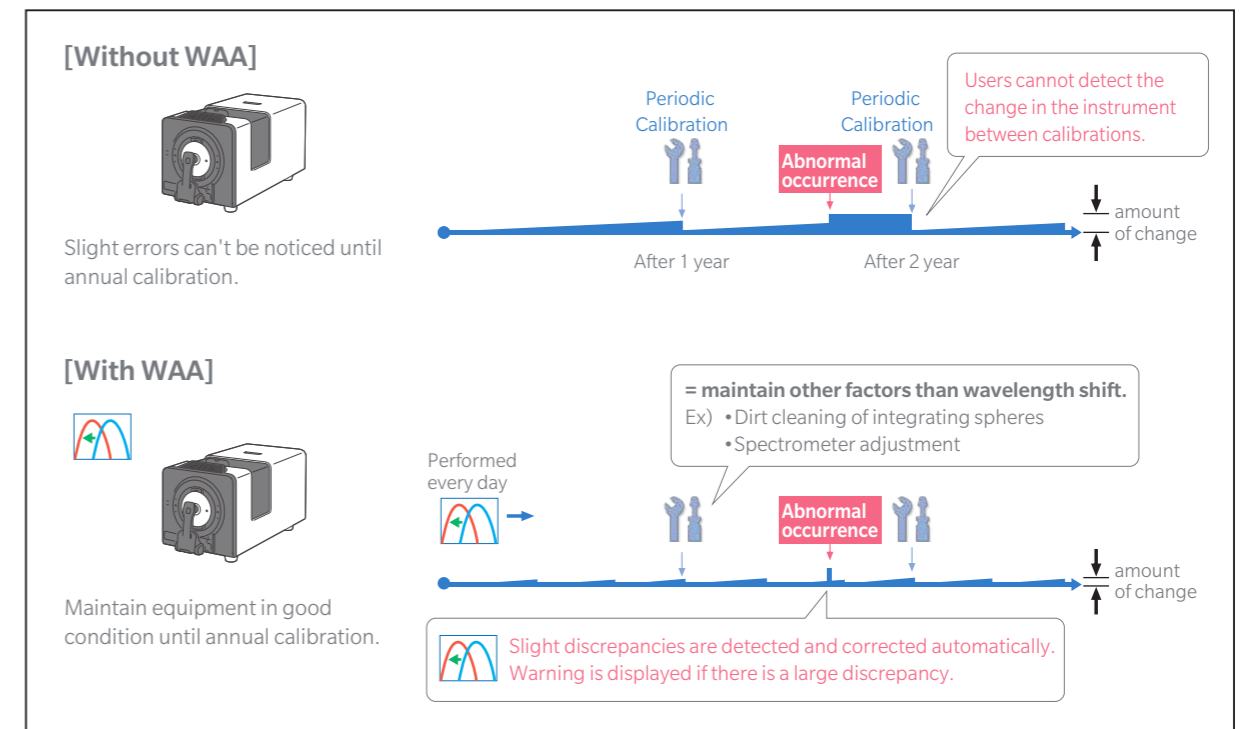
You can see the details in the catalog from the code on the right.

[SpectraMagic NX2 website](#)



## ■ Enhanced instrument reliability

WAA (Wavelength Analysis & Adjustment), which is a part of the periodic calibration service is Konica Minolta's unique technology that maintains the stability of the instrument and ensures reliable use until the next calibration. Additionally, each CM-3700A Plus is hand built in Japan by master technicians using a stringent quality control process.



## Try CM-3700A Plus with Augmented Reality

Scan the 2D code to see product size and design on your smartphones.

▼ iOS



▼ Android



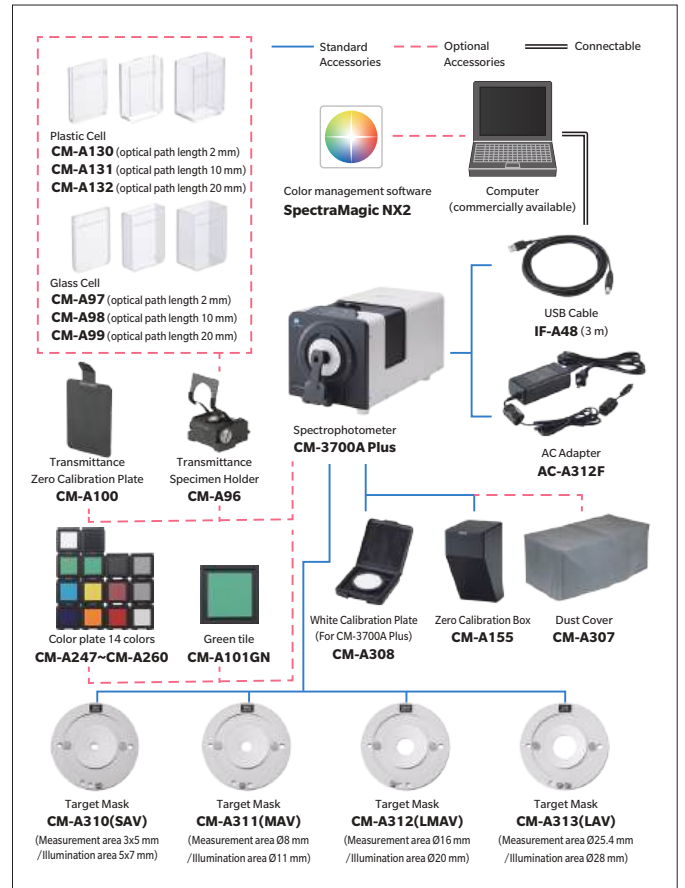
\* Please refer to the specification for the dimensions of the product.  
\* All the content copyrights belong to Konica Minolta, Inc.  
\* Depending on your environment, it may not be displayed.

# Specification

Illumination/ viewing system	Reflectance	di:8°, de:8° (diffuse illumination/8° viewing angle) SCI (specular component included)/SCE (specular component excluded) switchable & simultaneously Conforms to CIE No.15(2004), ISO 7724/1, ASTM E 1164, DIN 5033 Teil 7 and JIS Z 8722 condition c standard.
	Transmittance	di:0°, de:0° (diffuse illumination/0° viewing angle) Conforms to CIE No.15(2004), ASTM E 1164, DIN 5033 Teil 7 and JIS Z 8722 condition g standard.
Integrating sphere size		ø152 mm/6 inches
Detector		38-element silicon photodiode array
Spectral separation device		Diffraction grating
Wavelength range		360 to 740 nm
Wavelength pitch		10 nm
Half bandwidth		Approx. 14 nm average
Measuring range		0 to 200%; Resolution: 0.001%
Light source		Pulsed xenon arc lamp
Measurement/ illumination area	Reflectance	Changeable between SAV, MAV, LMAV and LAV SAV : 3x5 mm measurement / 5x7 mm illumination MAV : ø8 mm measurement / ø11 mm illumination LMAV : ø16 mm measurement / ø20 mm illumination LAV : ø25.4 mm measurement / ø28 mm illumination
	Transmittance	Approx. Ø20 mm / ø25 mm
Repeatability	White	Colorimetric values : Standard deviation within ΔE ab 0.005 Spectral reflectance : Standard deviation within 0.05% (When a white calibration plate is measured 30 times at 10-second intervals after white calibration)
	Black	Colorimetric values : Standard deviation within ΔE ab 0.02 Spectral reflectance : Standard deviation within 0.02% (When a black tile (BCRA Series II; reflectance: 1%) is measured 30 times at 10-second intervals after white calibration)
Inter-instrument agreement		Within ΔE*ab 0.08 (Based on average for 12 BCRA Series II color tiles; LAV/SCI. Compared to values measured with a master body under Konica Minolta standard measurement conditions)
UV adjustment		UV setting : UV cutoff filter: 400 nm Computer controlled: continuously variable, 0.0%~100.0% (1000step)
Sample temperature measurement		Accuracy (Within operating temperature/humidity range) SAV : ±1.2°C LMAV, MAV : ±0.8°C LAV : ±0.5°C
Measurement time		SCI or SCE : Approx. 2 s SCI or SCE with measuring sample temperature : Approx. 4.5 s SCI+SCE : Approx. 5 s SCI+SCE with measuring sample temperature : Approx. 5 s Transmittance : Approx. 2 s
Minimum interval between measurements		SCI or SCE : Approx. 3 s SCI or SCE with measuring sample temperature : Approx. 5 s SCI+SCE : Approx. 6 s SCI+SCE with measuring sample temperature : Approx. 6 s Transmittance : Approx. 3 s
Transmittance chamber		Maximum sample thickness : Approx. 50 mm Maximum sample length : Unlimited (no sides when transmittance chamber cover is open) Sample holder (optional) for holding sheet samples or containers of liquid samples can be installed/removed
Camera viewfinder function		Using internal camera. * Image viewable/copiable using optional software such as SpectraMagic NX2
Internal Performance Check*1		WAA (Wavelength Analysis & Adjustment) Technology
Ambient temperature sensor		Yes
Interface		USB2.0
Power		Dedicated AC adapter
Size (HxWxD)		Approx. 307(H) x 271(W) x 600(D)mm
Weight		Approx. 20.0kg
Operating temperature/humidity range		Temperature: 13 to 33°C, Relative humidity: 80% or less (at 33°C) with no condensation
Storage temperature/humidity range		Temperature: 0 to 40°C, Relative humidity: 80% or less (at 35°C) with no condensation
Standard Accessories		White Calibration Plate; Target Masks (SAV, MAV, LMAV, LAV); Zero Calibration Box; USB Cable (3 m); AC Adapter
Optional Accessories		Color Data Software SpectraMagic NX2; Transmittance Specimen Holder; Cells (Glass: 2 mm, 10 mm, 20 mm); Plastic Cells (2 mm, 10 mm, 20 mm); Transmittance Zero Calibration Plate; Color Plates; Green tile; Dust Cover

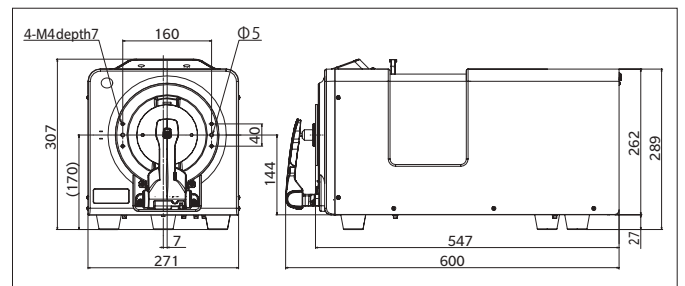
\*1 The WAA function enables wavelength diagnosis and wavelength correction of the instrument. This function is available free of charge for the first year after purchase, and can be continued after the second year by having the instrument serviced and calibrated.

# SystemDiagram



\* Depending on the location, some accessories may not be available.

# Dimensions (Units: mm)



- Windows® is a trademark or registered trademark of Microsoft Corporation in the USA and other countries.
- Intel® is a trademark or registered trademark of Intel Corporation in the USA and other countries.
- iPhone® is a registered trademark of Apple Inc., registered in the USA and other countries.
- Android™ is a trademark of Google LLC in the USA and other countries.
- KONICA MINOLTA, the Konica Minolta logo and symbol mark, "Giving Shape to Ideas" and SpectraMagic are registered trademarks or trademarks of KONICA MINOLTA, INC.
- The specifications given here are subject to change without prior notice.
- Displays shown are for illustration purposes only.

# ISO Certifications of KONICA MINOLTA, Inc., Sakai Site



JQA-QMA15888  
Design, development, manufacture/  
manufacturing management, calibration, and  
service of measuring instruments



JQA-E-80027  
Design, development,  
manufacture, service and sales  
of measuring instruments



# SAFETY PRECAUTIONS

For correct use and for your safety, be sure to read the instruction manual before using the instrument.

- Always connect the instrument to the specified power supply voltage. Improper connection may cause a fire or electric shock.

<b>KONICA MINOLTA, INC.</b>	Osaka, Japan	PHONE: (888)473-2656 (in USA), +1(201)236-4300 (outside USA) FAX: +1(201)785-2480 E-Mail: service.us@konicaminolta.com
<b>Konica Minolta Sensing Americas, Inc.</b>	New Jersey, U.S.A.	PHONE: +31(0)30 248-1193 E-Mail: info.benelux@seu.konicaminolta.eu
<b>Konica Minolta Sensing Europe B.V.</b>	European HQ / BENELUX	PHONE: +49(0)89 4357 156 0 E-Mail: info.germany@seu.konicaminolta.eu
	German Office	PHONE: +33(0)1 80 11 10 70 E-Mail: info.france@seu.konicaminolta.eu
	UK Office	PHONE: +44(0)1925 467300 E-Mail: info.uk@seu.konicaminolta.eu
	Italian Office	PHONE: +39 02849488_00 E-Mail: info.italy@seu.konicaminolta.eu
	Swiss Office	PHONE: +41(0)43 322-9800 E-Mail: info.switzerland@seu.konicaminolta.eu
	Nordic Office	PHONE: +46(0)31 7099464 E-Mail: info.nordic@seu.konicaminolta.eu
	Polish Office	PHONE: +48(0)71 73452-11 E-Mail: info.poland@seu.konicaminolta.eu
<b>Konica Minolta (CHINA) Investment Ltd.</b>	SE Sales Division	PHONE: +86(0)21-6057-1089 E-Mail: hcn_sensing@gcp.konicaminolta.com
	Beijing Office	PHONE: +86(0)10-8522 1551 E-Mail: hcn_sensing@gcp.konicaminolta.com
	Guangzhou Office	PHONE: +86(0)20-3826 4220 E-Mail: hcn_sensing@gcp.konicaminolta.com
	Chongqing Office	PHONE: +86(0)23-6773 4988 E-Mail: hcn_sensing@gcp.konicaminolta.com
		+86(0)23-6794 9512
	Qingdao Office	PHONE: +86(0)532-8079 1871 E-Mail: hcn_sensing@gcp.konicaminolta.com
	Wuhan Office	PHONE: +86(0)27-6885 0586 E-Mail: hcn_sensing@gcp.konicaminolta.com
	Shenzhen Office	PHONE: +86(0)755-2868 7535 E-Mail: hcn_sensing@gcp.konicaminolta.com
	Xiamen Office	PHONE: +86(0)592-7107 399 E-Mail: hcn_sensing@gcp.konicaminolta.com
<b>Konica Minolta Sensing Singapore Pte. Ltd.</b>	Singapore	PHONE: +65 6563-5533 E-Mail: ssg@gcp.konicaminolta.com
<b>Konica Minolta Sensing Korea Co., Ltd.</b>	Korean HQ	PHONE: +82(0)2-523-9726 E-Mail: se.korea@konicaminolta.com
	Cheonan Office	PHONE: +82(0)41-556-9726 E-Mail: se.korea@konicaminolta.com

Addresses and telephone/fax numbers and e-mail address are subject to change without notice. For the latest contact information, please refer to KONICA MINOLTA Worldwide Offices web page:

<https://konicaminolta.com/instruments/network>